

THE HISTORY & INDUSTRIAL ARCHEOLOGY OF PEWSHAM LOCK COTTAGE.



PEWSHAM LOCK COTTAGE. c 1861. Drawing by Hazel Yates-Jones (2007).

Completed in 1810 the main line of the Wilts & Berks Canal ran from the Kennet & Avon Canal at Semington to the River Thames at Abingdon, with branches to Wantage, Longcot, Calne and Chippenham.

Just 500 yards south of the Chippenham branch were the three locks of the Pewsham flight, which combined together, raised the canal almost 29 feet.

By 1831 a carpenters workshop, dry-dock, lock house, sawpit and lime kilns had been built which turned this rural site into a busy industrial landscape, where boat building and repair work took place.

Almost 100 years after an official Act of Parliament closed the canal the locks and surrounding structures are being uncovered and restored by the Canal Trust.

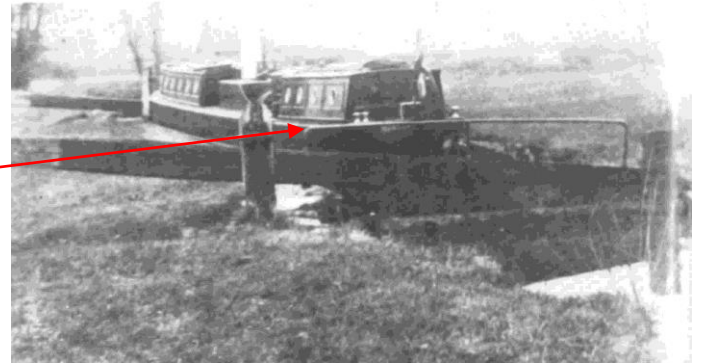
With the help of the St. Andrew's Rangers of Chippenham the site of Pewsham Lock Cottage is being slowly excavated and examined. The Top Lock is also being cleared and ironwork recovered from within.

This document shows the finds we made, to include measurements, pictures and historical information on the cottage to paint a picture of what life was like here in the 1800's. This will hopefully be updated as the excavation continues.

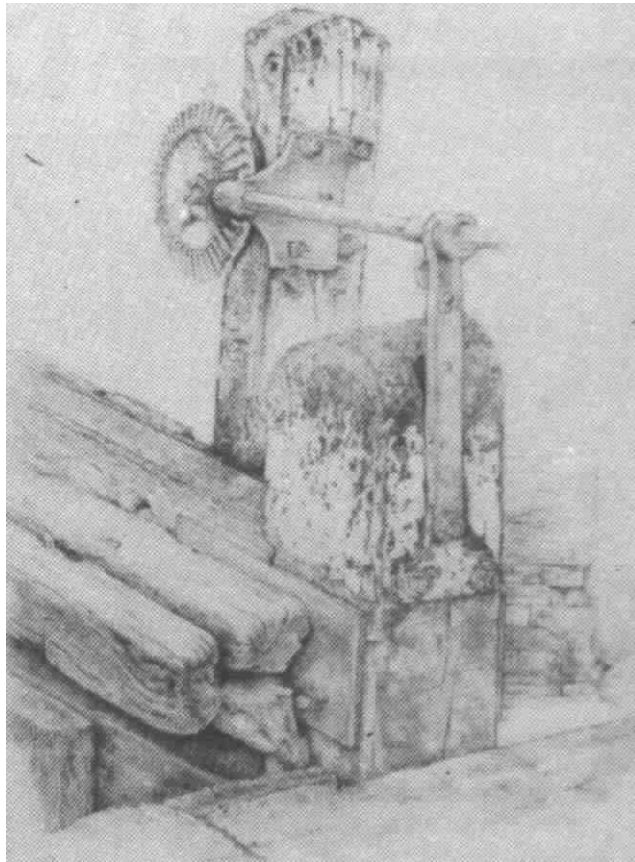
PEWSHAM LOCK COTTAGE EXCAVATION 2007



Handrail from Pewsham Top Lock gate with remaining timber from the gate itself.



Handrail as seen on Ardington Top Lock in 1895.



Gate paddle gear mechanism as found on the Oxford Canal. Compare this with the mechanism found at Pewsham Top Lock.



Paddle gear mechanism from Pewsham Top Lock. The windlass would have turned on this end.

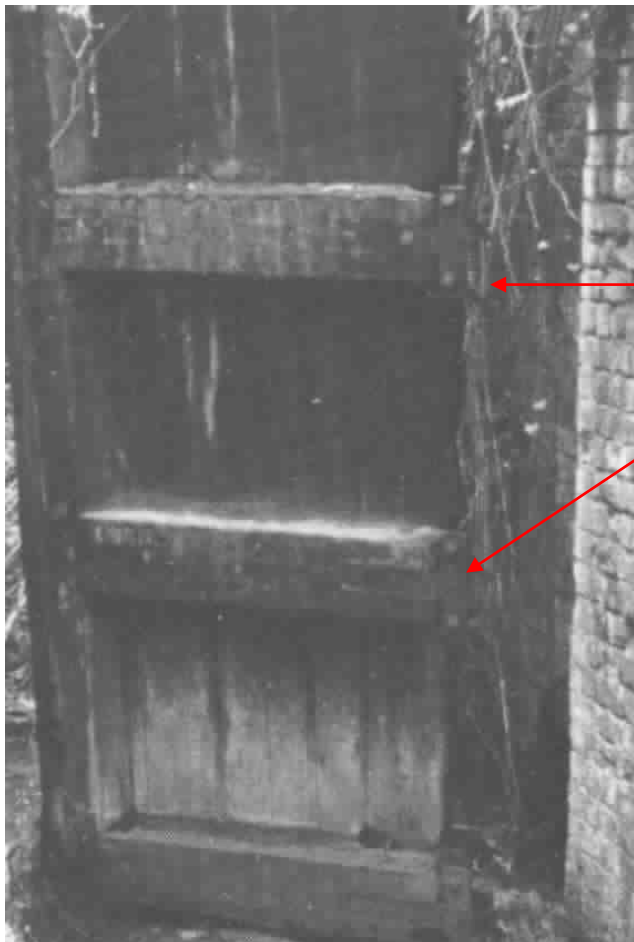




Found under the site of the fireplace this appears to be the 'hearth plate'.

Supporting metalwork found in the lock chamber. Possibly as reinforcement to the lock gates.

Found in the chamber of Pewsham Top Lock this boot scraper is believed to have come from the lock cottage.



Supporting brackets from a picture of Lock Seven on the Seven Locks Flight at Tockenham. Taken in 1970. The example above from Pewsham Top Lock is very close in comparison.

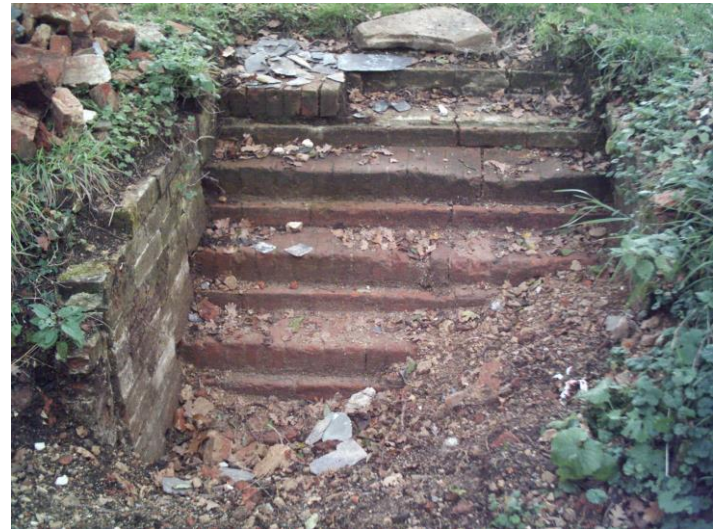


Lock cottage overview showing two external walls, the recently excavated steps, and an inner wall which may have supported the main wall.



Floor stone found close to the steps.

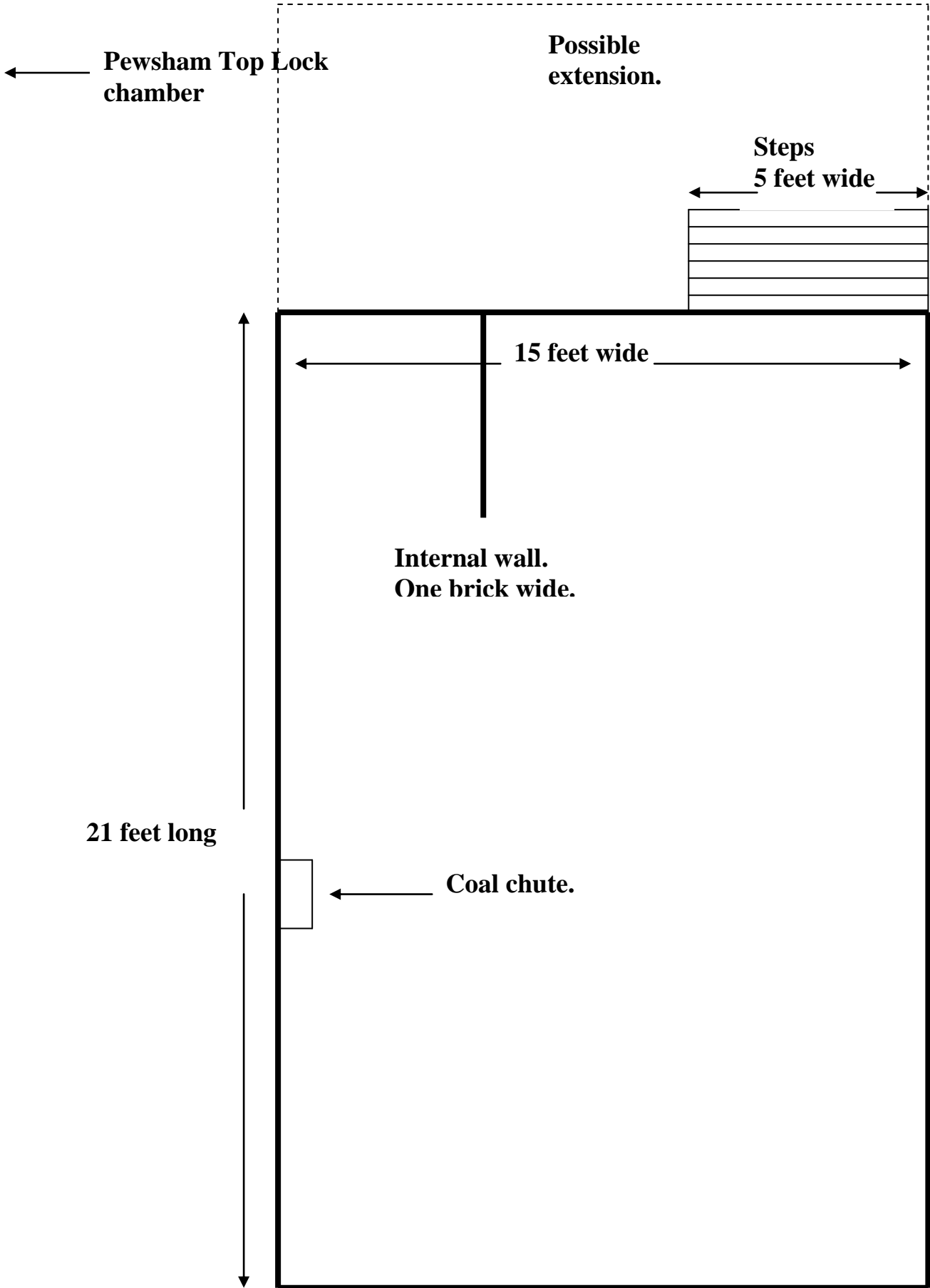
The full extent of the upper steps have been revealed. Surprisingly these measure 5 feet in width, and may well have gone down into the cellar. Slate has been bedded in on top of the highest step as a floor surface. Further investigations will reveal how far this slate goes back but will conclude whether or not there was an extension, as the 1885 map suggests.



Early excavations revealed the wear on the steps, which was found well off-centre. Suggestions for this may have been that household objects were kept on the steps themselves, or the opening of the door may have obstructed the journey up and down.

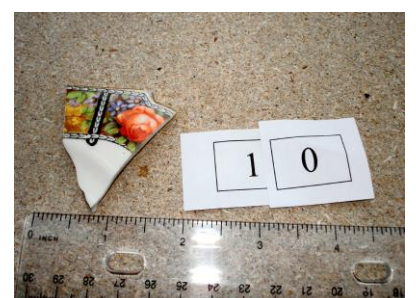
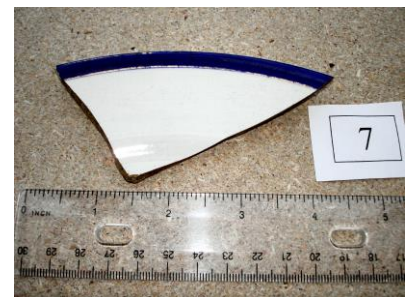
What is believed to be the coal chute. Found to the front of the house facing the lock where it would have been easier to unload from the narrow boats.





**PEWSHAM LOCK COTTAGE.
SITE LAYOUT 2007.**

PEWSHAM LOCK COTTAGE. (SMALL FINDS).



PEWSHAM LOCK COTTAGE. (SMALL FINDS 2).

